

Presented by
**MICHIGAN
RADIOLOGICAL
SOCIETY**

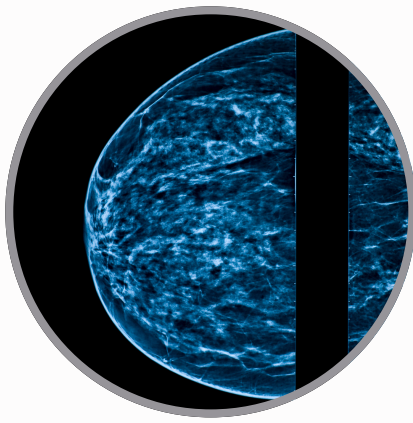


2024 BREAST IMAGING *Conference*

9-10

November
2024

DETROIT SHERATON NOVI
21111 HAGGERTY RD, NOVI, MI 48375



Welcome to the 2024 Breast Imaging Conference, where we will gather at the Detroit Sheraton Novi to explore the future of breast imaging. Over this two day conference, we will be joined by experts from across Michigan and the nation who are at the forefront of shaping the future of breast health.

Our national lineup of speakers includes:

- Debra Ikeda, MD Professor Emerita of Radiology (Breast Imaging) at Stanford Health Care, California.
- Maxine Jochelson, MD Director of Radiology at the Evelyn H. Lauder Breast Center, Memorial Sloan Kettering Cancer Center, New York City.
- Jessica Leung, MD, FACR, FSBI Professor of Diagnostic Radiology at the University of Texas MD Anderson Cancer Center, Houston; Section Chief of Breast Imaging at MD Anderson Cancer Center.

Alongside these national leaders, we are privileged to feature experts from diverse institutions across Michigan. Together, we will explore visionary research, cutting-edge technologies, and compassionate care strategies that will shape the future of breast imaging.

Thank you for joining us in this pivotal moment. Let us inspire and innovate as we advance towards a future where every individual receives the highest standard of breast health care.

Accreditation Statement "This activity has been planned and implemented in accordance with the accreditation requirements and policies of the Accreditation Council for Continuing Medical Education (ACCME) through the joint providership of Southern Medical Association and Michigan Radiological Society. The Southern Medical Association is accredited by the ACCME to provide continuing medical education for physicians."

Designation Statement "Southern Medical Association designates this activity for a maximum of **15 hours AMA PRA Category 1 Credits**. Physicians should claim only the credit commensurate with the extent of their participation in this activity."





We are pleased to host the Breast Imaging Conference 2024 at the Detroit Sheraton Novi Hotel, a venue designed to provide comfort and convenience throughout your stay.

Accommodation and Amenities:

For those staying at the hotel, enjoy spacious and well-appointed guest rooms, complete with:

- Complimentary Wi-Fi
- 24-hour fitness center
- Indoor pool and hot tub for relaxation
- On-site restaurant and bar offering breakfast, lunch, and dinner

Dining:

The Sheraton Café serves a variety of meals and beverages throughout the day. Grab a coffee before sessions or relax with a cocktail in the evening at No.VI Urban Bar & Grill.

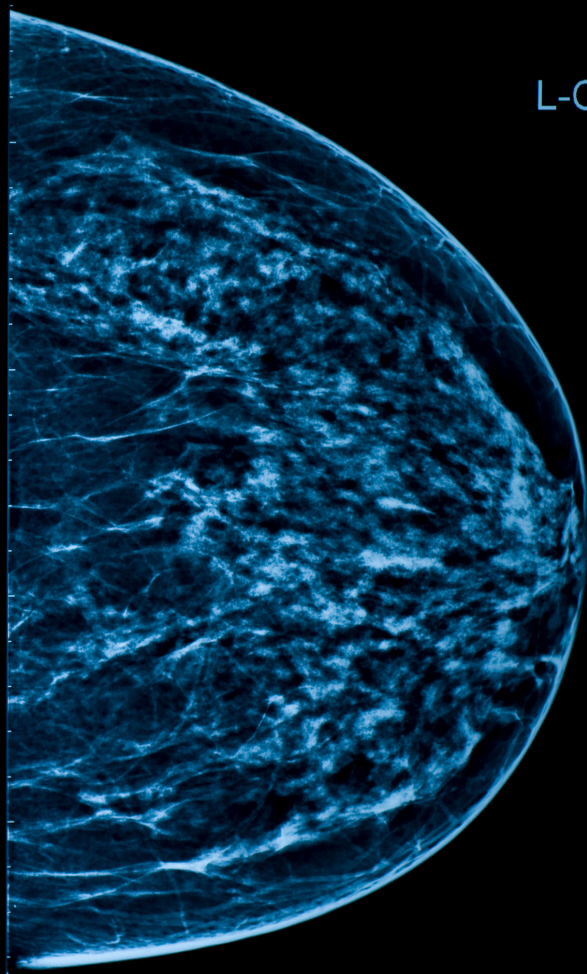
Nearby Attractions:

If you have some free time, the hotel is close to shopping, dining, and entertainment in Novi and nearby Twelve Oaks Mall.

We hope your stay at the Detroit Sheraton Novi is both enjoyable and convenient, offering a perfect blend of relaxation and productivity during the conference.



UNVEILING INSIGHTS,
FOSTERING
EXPERTISE: BRIDGING
EXCELLENCE IN
BREAST IMAGING



L-CC

PLANNING COMMITTEE

Bakul Lather, MD, Chair

Stacy Ries, MD, Co-Chair

Lori Joy Gallardo, MD

Randy Hicks, MD, MBA, FACR

Dean Hountras, MD

Deborah Jeffries, MD, FACR

Katherine Klein, MD, FACR

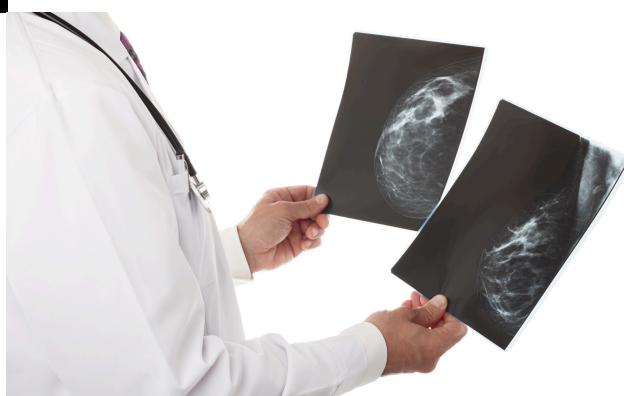
Sabala Mandava, MD

Carol McLaughlin, MD

Vidya Pai, MD, FACR

David Pinkney, MD

Biren Shah, MD, FACR



KEYNOTE SPEAKERS



Dr. Debra Ikeda is a Professor of Radiology (Breast Imaging), Emerita at Stanford University School of Medicine. A Society of Breast Imaging and American College of Radiology Fellow, she works clinically and on research in the Stanford Breast Imaging Division, founded/is co-director of the California Breast Imaging Information Group (CBIIG), was lead author of the first ACR BI-RADS MRI Lexicon, published >140 original/scientific articles, 200 scientific/educational abstracts, presented >345 USA/international educational presentations. Research includes mammographic positioning/image quality, DBT, MRI/DWI, tattoo/wireless/axillary localizations, MRI/Mammography AI, MRI AI segmentation, breast density legislation effects on imaging, ergonomics, interval cancer.



Dr. Maxine Jochelson is a board-certified radiologist with expertise in breast imaging. She completed her radiology residency at the University of Southern California followed by a fellowship in oncologic radiology at the Dana Farber Cancer Institute at Harvard University. She went on to run the Radiology Department at the Dana Farber for eight years after which she returned to Los Angeles where she held positions at Cedars Sinai, Salick Health Care and Tarzana Medical Center, where she served as the Co-Director of the Women's Imaging Center. Dr. Jochelson then went to Memorial Sloan Kettering Cancer Center in New York City, where she served as the Director of Radiology at the Evelyn Lauder Breast Center since 2009 and, for two years, as the Service Chief of the internationally renowned MSKCC Breast Service.

Dr. Jochelson has been involved in studying many aspects of breast imaging, such as imaging in high-risk women, as well as women undergoing neoadjuvant chemotherapy, however, her primary focus of research has been to investigate and promote the use of Contrast Enhanced Mammography (CEM), both as a diagnostic tool and for screening women at increased risk for developing breast cancer. Dr. Jochelson has lectured on this and other topics extensively throughout the world. She has published over 120 peer-reviewed papers and has written contributions to multiple textbooks.



Dr. Jessica Leung is a Professor of Diagnostic Radiology at the University of Texas MD Anderson Cancer Center in Houston, Texas. She serves as Section Chief of Breast Imaging, overseeing clinical operations, research, educational initiatives, and faculty development.

Dr. Leung graduated summa cum laude from Harvard University and completed her medical training at Harvard Medical School. She completed her Diagnostic Radiology Residency and Women's Imaging Fellowship at the University of California, San Francisco (UCSF). She has served as faculty at Brigham and Women's Hospital, Dana-Farber Cancer Institute, Harvard Medical School, and UCSF. Additionally, she was the Medical Director of the Breast Health Center at California Pacific Medical Center (Sutter Health), a nationally recognized breast center in San Francisco.

Dr. Leung has an extensive record of national service. She is a member of the American College of Radiology (ACR) Committees on Economics, Education, and BI-RADS, and has served on the ACR Committee on Government Relations and Stereotactic Biopsy. She remains a clinical reviewer for the ACR Stereotactic Biopsy Accreditation Program and serves on the Board of Directors for the National Accreditation Program for Breast Centers.

Dr. Leung has published influential research and review articles in breast imaging and has lectured extensively both nationally and internationally. Her numerous awards include the American Roentgen Ray Scholar and UCSF Outstanding Teacher Award. She is a Fellow of both the American College of Radiology and the Society of Breast Imaging.

THE SPEAKER LINEUP



Sara Abbott, MD

Assistant Professor,
University of Michigan



Kathy Borovicka, MD

Clinical Assistant Professor, Radiology,
Division of Breast Imaging,
University of Michigan



Ellen Chapel, MD

Assistant Professor, Breast Pathology,
Department of Pathology,
University of Michigan



Mayada Dabajeh, MD

Radiologist,
Henry Ford Hospital



Annette Joe, MD, FACR

Clinical Associate Professor, Radiology
Division of Breast Imaging,
University of Michigan, Ann Arbor



Sayee Kiran, MD, FACS

Assistant Professor of Surgery,
Oakland University William Beaumont School of
Medicine,
Breast Surgical Oncologist and Oncoplastic Surgeon,
Corewell Health



Ruth Lerman, MD

Medical Director Corewell East Center for Mindfulness
Assistant Professor Oakland University William
Beaumont School of Medicine
Certified Mindfulness Based Stress Reduction Teacher
Trainer



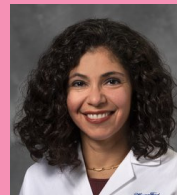
Kenneth Levin, MD

Medical Director, Department of Radiation Oncology,
Henry Ford West Bloomfield Hospital



Carol McLaughlin, MD

Clinical Assistant Professor, Radiology
Director, Breast Imaging Fellowship Program,
University of Michigan



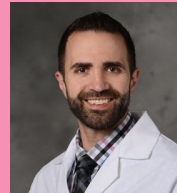
Mitra Noroozian, MD

Radiologist,
Henry Ford Hospital



Michelle Sakala, MD

Clinical Associate Professor, Radiology
Division of Abdominal Radiology
Division of Breast Imaging,
University of Michigan, Ann Arbor



Dominic Semaan, MD

Radiologist,
Henry Ford Hospital



Evita Singh, MD

Radiologist,
Karmanos Cancer Center



W. Tania Rahman, MD

Clinical Assistant Professor, Radiology
Division of Breast Imaging,
University of Michigan



Kyle Wilson, MD, PhD

Clinical Assistant Professor, Radiology
Division of Breast Imaging
Division of Vascular and Interventional Radiology,
University of Michigan, Ann Arbor



2024 BREAST IMAGING CONFERENCE

November 9 & 10, 2024



LEARNING OBJECTIVES

Conference Objectives

- Enhance Knowledge: Participants will gain a comprehensive understanding of current advancements and techniques in breast imaging, including Contract Enhanced Mammography, multimodality imaging, and cryoablation.
- Improve Diagnostic Skills: Attendees will develop the ability to apply new diagnostic strategies, including nodal assessment and pathologic evaluation of high-risk lesions, to enhance patient care.
- Address Cognitive Bias: Participants will learn to recognize and mitigate cognitive biases that can impact breast imaging and diagnosis, improving decision-making and patient outcomes.
- Promote Collaboration: Foster collaboration among healthcare professionals by discussing global outreach strategies and sharing insights on best practices in breast imaging and cancer management.
- Facilitate Q&A Interaction: Provide a platform for interactive discussions where participants can ask questions and share experiences related to breast imaging challenges and advancements.

Kathy Borovicka, MD & Sara Abbott, MD - Radiology Pathology Correlation of the Nipple-Areolar Complex

- 1. Review the anatomy of the nipple-areolar complex (NAC).
- 2. Overview of benign and malignant pathologies of the NAC.
- 3. Present several NAC cases with imaging, corresponding pathology, and management.

Ellen Chapel, MD - Pathologic Evaluation of High-risk Benign Breast Disease

- 1. Discuss high-risk benign breast lesion
- 2. Discuss the role of pathologic evaluation
- 3. Discuss importance of a multidisciplinary approach in patient care.

Mayada Dabajeh, MD - CEM Biopsy - Tips and Tricks

- 1. Discuss the clinical scenarios that warrant the use of CEM biopsy.
- 2. Discuss the key steps involved in performing a CEM biopsy.
- 3. Discuss strategies for maintaining patient comfort and communication during the biopsy process.

Debra Ikeda, MD - Finding Invasive Lobular Cancer: The Cancer that Gives Radiologists a Bad Name

- Discuss imaging appearances of invasive lobular cancer on mammography, ultrasound, MRI, FDG PET-CT, and FES PET-CT
- Discuss pitfalls of missing invasive lobular cancer due to low tumor cell volumes
- Discuss the use of FES PET-CT in ER positive breast cancer recurrences and metastases

Debra Ikeda, MD - Post-Operative and Reconstructed Breast on MRI US Mammography

- Analyze expected appearances of the post operative breast after oncoplastic surgery and fat transfer
- Discuss, and predict locations of breast cancer recurrences in the post mastectomy patients in postoperative surveillance
- Discuss which skin lesions to be suspicious of after cancer surgeries

Debra Ikeda, MD - What's New on Imaging Breast Implants

- Discuss normal appearances and types of breast implants
- Discuss rare patient symptoms related to, and imaging appearances of, acellular dermal matrix (ADM)
- Review causes of peri-implant fluid collections, including implant related Anaplastic Large Cell Lymphoma (ALCL) and squamous cell carcinoma

Debra Ikeda, MD - Multimodality Breast Imaging on Mammo MRI US CEM

- Discuss implications of the SOUND trial relating to US of axillary lymph nodes in breast cancer patients
- Discuss Contrast enhanced mammography, MRI, mammography, and US correlation
- Discuss difficult biopsies/wire/wireless localization cases

Maxine Jochelson, MD - Contract Enhanced Mammography - Let's Get Started

- Discuss What tools/equipment are required to perform contract mammography
- Discuss contract mammography protocols
- Discuss the data regarding contract mammography reactions and how to avoid them

Maxine Jochelson, MD - Contract Enhanced Mammography Putting Theory Into Practice

- Demonstrate the need for understanding contract reactions and how to minimize the incidence and risk.
- Explain the indications for performing contract mammography
- Analyze contract mammography images to detect abnormalities not seen on other modalities

Maxine Jochelson, MD - I Have Been Treated for Cancer - What Next?

- Discuss the protocols for screening women after mastectomy and lumpectomy.
- Discuss the need for supplemental screening in this population.
- Discuss the pros and cons of the need for systemic staging after breast cancer screening.

Maxine Jochelson, MD - High Risk Screening for Breast Cancer - The Devil is in the Details

- Discuss the different needs for screening within the high risk population
- Discuss what breast imaging modalities improved outcomes in this population
- Explain protocols for timing of screening will be emphasized

LEARNING OBJECTIVES

Annette Joe, MD, FACR - Disparities in Breast Cancer

- Discuss existing disparities in breast cancer incidence and outcomes.
- Discuss the contributing factors that lead to these disparities.
- Identify strategies for reducing or eliminating these disparities in breast cancer.

Sayee Kiran, MD - Oncoplastic Reconstruction

- Define oncoplastic surgery and the indications for the procedures
- Have basic understanding of oncoplastic techniques and tissue re-arrangement
- Understand how breast imaging is impacted from these surgical techniques

Jessica Leung, MD, FACR. FSBI - BI-RADS 6th Edition: The Next Frontier

- Discuss the updates in BI-RADS 6th Edition and their impact on breast imaging reporting and data systems.
- Review the new BI-RADS 6th Edition guidelines to improve consistency and accuracy in interpreting and reporting breast imaging findings.
- Discuss the role of BI-RADS 6th Edition in enhancing diagnostic precision and improving patient management in breast cancer detection.

Jessica Leung, MD, FACR. FSBI - Breast Cancer Staging: Clinical Significance and Role of Imaging

- Discuss the key components of breast cancer staging and their clinical implications for treatment planning and prognosis.
- Review the role of imaging in accurate breast cancer staging, including the identification of tumor size, nodal involvement, and distant metastases.
- Review imaging modalities effectively to enhance the accuracy of staging and improve personalized patient management in breast cancer care.

Jessica Leung, MD, FACR. FSBI - Nodal Assessment in Breast Cancer: Multifaceted Approach

- Discuss the importance of assessing lymph nodes in breast cancer diagnosis and treatment.
- Review the different imaging techniques used to evaluate lymph nodes in breast cancer.
- Discuss a team-based approach for accurate nodal assessment and better patient care.

Jessica Leung, MD, FACR. FSBI - Problem-Solving Breast MRI: Imaging and Clinical Indications

- Discuss when to use breast MRI for diagnosing and managing breast conditions.
- Discuss how to interpret key breast MRI findings for different clinical scenarios.
- Apply breast MRI effectively to solve challenging diagnostic cases and guide patient care

Ruth Lerman, MD - Finding Compassion for Difficult People...Including Yourself 🧘

- To practice “putting things down” during difficult moments
- To recall that practicing self-compassion is not self-indulgent
- To state why finding compassion for difficult people helps themselves.

Kenneth Levin, MD - Breast Radiotherapy 2024: What We Do, Why We Do It, and How You Help Us

- Discuss the Role of Radiotherapy in Breast Cancer Treatment
- Discuss the Rationale Behind Radiotherapy Protocols
- Identify Collaborative Roles in Enhancing Radiotherapy Outcomes

Carol McLaughlin, MD - Radiology Correlation with Breast Cancer Biology

- Discuss the different biomarkers of breast cancer
- Describe and discuss the imaging characteristics of invasive breast cancer with differing molecular subtypes and the impact on patient treatment
- Participate meaningfully in tumor board and discussions with patients

Mitra Noroozian, MD - Cognitive Bias and Breast Imaging Errors

- Discuss common cognitive biases that contribute to diagnostic errors in breast imaging interpretation.
- Review the impact of cognitive biases on decision-making and diagnostic accuracy in breast imaging.
- Discuss strategies to mitigate cognitive bias and improve patient outcomes in breast imaging.

Michelle Sakala, MD - Contrast Media: Who, What, When, and How

- Review who is and is not a candidate for receiving contrast media.
- Discuss what to do when there is a contrast reaction.
- Identify when to use epinephrine in a contrast reaction.
- Discuss how to administer epinephrine.

Dominic Semaan, MD - Global Outreach for the Breast Imager

1. Discuss the need for global breast imaging programs in underserved areas.
2. Discuss ways to start breast imaging outreach in low-resource settings.
3. Discuss ways to implement outreach in local communities

Evita Singh, MD - Breast Cancer in the Young

- 1. Review statistics and workup of breast cancer in patients under 40.
- Discuss workup and management of pregnancy associated with breast cancer.
- Review challenging and interesting cases

Wahida (Tania) Rahman, MD - Improving Patient Comfort in Breast Imaging Procedures

- Identify pre- and intra-procedural techniques to enhance patient comfort, sense of control, and reduce anxiety.
- Discuss effective communication to improve patient connection and procedural success.
- Discuss diverse patient considerations in the context of procedural care.
- Review appropriate post-procedure follow-up and feedback for improvement.

Kyle Wilson, MD - Status and Future Direction of Cryoablation for Breast Carcinoma

- Explain the mechanism of cryoablation
- Explain patient selection and follow up
- Discuss future use of cryoablation: broadening patient selection and combination with immunotherapy

Question & Answer Session - Abbott, Borovicka, Chapel, Joe, McLaughlin, Wilson

- Assess the current status and future directions of cryoablation in breast carcinoma treatment.
- Explore the relationship between radiology findings and breast cancer biology.
- Evaluate the pathology of high-risk benign breast disease and its implications for patient management.

Question & Answer Session - Dabajeh, Jochelson, Leung, Singh

- Identify key challenges and strategies in breast imaging for various conditions.
- Evaluate best practices for screening and diagnosis to enhance patient outcomes.
- Discuss the impact of cognitive biases and global outreach on breast imaging practices.

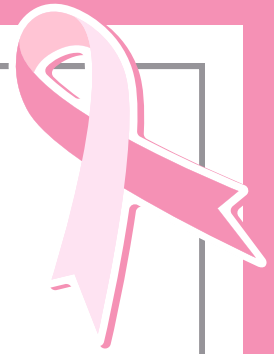
Question & Answer Session - Ikeda, Jochelson, Noroozian, Rahman, Semaan

- Understand the principles and applications of Contrast Enhanced Mammography (CEM).
- Discuss the unique challenges and considerations for diagnosing and treating breast cancer in younger patients.
- Identify best practices for implementing the BI-RADS 6th Edition and CEM biopsy techniques in clinical settings.

Question & Answer Session - Ikeda, Kiran, Lerman, Leung, Levin, Sakala

- Evaluate the multifaceted approaches to nodal assessment in breast cancer.
- Discuss the principles of oncoplastic reconstruction and its impact on patient outcomes.
- Identify clinical indications for multimodality breast imaging and effective use of contrast media.

**2024 BREAST IMAGING CONFERENCE
NOVEMBER 9 & 10, 2024
PRELIMINARY SCHEDULE**



**Saturday
November 9, 2022**

7:00 AM Registration and Breakfast
7:50 AM Welcome, opening remarks, **Bakul Lather, MD**

Session 1

8:00 AM Contrast Enhanced Mammography - Let's Get Started,
Maxine Jochelson, MD
8:30 AM Breast Cancer in the Young, **Evita Singh, MD**
9:00 AM Contrast Enhanced Mammography – Putting Theory Into Practice,
Maxine Jochelson, MD
9:30 AM BI-RADS 6th Edition: The Next Frontier , **Jessica Leung, MD, FACR, FSBI**
10:00 AM *Break*

Session 2

10:20 AM I Have Been Treated for Breast Cancer - What Next?, **Maxine Jochelson, MD**
10:50 AM Breast Cancer Staging: Clinical Significance and Role of Imaging,
Jessica Leung, MD, FACR, FSBI
11:20 AM CEM Biopsy - Tips and Tricks, **Mayada Dabajeh, MD**
11:50 AM Question & Answer Session - **Dabajeh, Jochelson, Leung, Wilson**
12:20 PM *Lunch*

Session 3

1:00 PM Nodal Assessment in Breast Cancer: Multifaceted Approach,
Jessica Leung, MD, FACR, FSBI
1:30 PM Oncoplastic Reconstruction, **Sayee Kiran, MD, FACS**
2:00 PM Multimodality Breast Imaging on Mammo MRI US CEM, **Debra Ikeda, MD**
2:30 PM Problem-Solving Breast MRI: Imaging and Clinical Indications,
Jessica Leung, MD, FACR, FSBI
3:00 PM *Break*

Session 4

3:30 PM Finding Compassion for Difficult People...Including Yourself 😊,
Ruth Lerman, MD
4:00 PM Breast Radiotherapy 2024: What We Do, Why We Do It, and How You Help Us,
Kenneth Levin MD
4:30 PM Contrast Media: Who, What, When, and How, **Michelle Sakala, MD**
5:00 PM Question & Answer Session - **Ikeda, Kiran, Lerman, Leung, Levin, Sakala**
5:30 PM *Adjourn*
6:30 PM *Cocktail Reception*

**2024 BREAST IMAGING CONFERENCE
NOVEMBER 9 & 10, 2024
PRELIMINARY SCHEDULE**



**Sunday
November 10, 2024**

7:00 AM Registration and Breakfast
7:50 AM Welcome, opening remarks, **Stacy Ries, MD**

Session 1

8:00 AM Finding Invasive Lobular Cancer: The Cancer That Gives Radiologists a Bad Name, **Debra Ikeda, MD**
8:30 AM High Risk Screening For Breast Cancer - The Devil is In the Details, **Maxine Jochelson, MD**
9:00 AM Cognitive Bias and Breast Imaging Errors, **Mitra Noroozian, MD**
9:30 AM Global Outreach for the Breast Imager, **Dominic Semaan, MD**
10:00 AM *Break*

Session 2

10:20 AM Post-Operative and Reconstructed Breast on MRI US Mammography, **Debra Ikeda, MD**
10:50 AM Improving Patient Comfort in Breast Imaging Procedures, **W. Tania Rahman, MD**
11:20 AM What's New on Imaging Breast Implants, **Debra Ikeda, MD**
11:50 AM Question & Answer Session - **Ikeda, Jochelson, Noroozian, Rahman, Semaan**
12:20 PM *Lunch* - Status and Future Direction of Cryoablation for Breast Carcinoma, **Kyle Wilson, MD PhD**

Session 3

1:10 PM Radiology Correlation with Breast Cancer Biology, **Carol McLaughlin, MD**
1:40 PM Radiology Pathology Correlation of the Nipple Areolar Complex, **Sara Abbott, MD & Kathy Borovicka, MD**
2:10 PM *Break*
2:30 PM Pathologic Evaluation of High-risk Benign Breast Disease, **Ellen Chapel, MD**
3:00 PM Disparities in Breast Cancer, **Annette Joe, MD, FACR**
3:30 PM Question & Answer Session - **Abbott, Chapel, Ikeda, Joe, McLaughlin, Rahman**
4:00 PM *Adjourn*



Thanks to our Sponsors



Advanced Radiology Services
PC



HOLOGIC[®]



Hyperbaric Oxygen
(HBO₂) Therapy

by RestorixHealth

CME and ASRT Certificates:

CME certificates will be processed by the Southern Medical Association approximately two weeks after the conference. Please watch your email for information from the Southern Medical Association.

ASRT certificates will be emailed to radiologic technologists by the Michigan Radiological Society within two weeks following the conference.

For any questions, please contact Shannon Sage at shannon@michigan-rad.org.